

**Spring** USA<sup>®</sup>

*Buffet Systems*



*The Evolution of Intelligent Design™*

# The Champions of Breakfast

# Spring USA®



## Presenting our Enhanced Breakfast Collection

With exclusive design, superior quality, and unique detail, the Spring USA Breakfast Collection meets the demands of the world's top professionals

A new addition to our Champions of Breakfast Line-up!  
Each Acrylic cylinder has a 10-liter capacity. Choose from our single, double or triple dispenser. The triple unit has a rotating chassis for easy dispensing.



2531 Single Dispenser



2531-3 Triple Dispenser



2531-2 Double Dispenser

**Spring USA®**  
The Evolution of Intelligent Design™

# The Breakfast Collection

## Beverage Dispensers



2511-6/7  
25" 7 Ltr



2511-6/4  
22" 4 Ltr



2525-6/7  
25" 7 Ltr  
18/10 stainless steel  
drip tray

**Cereal  
Dispenser**  
18/10 stainless steel

2530-6/7  
27 5/8" 7 1/2 qt.



**Milk  
Dispenser**  
18/10 stainless steel  
with ice tube

2528-6/5  
18 1/2" 5 1/4 qt.



# *Dispense With Half of Your Inventory*

2512-6/5.2

- *Space Saving Design*
- *One Container-  
2- 5 Liter Capacities*
- *One Handed Dispensing*
- *Total Measurement 12"x14"x26"*



## **Double Juice Dispenser**

Space saving design with convenient one-handed dispensing. Our Double Juice Dispenser offers one container with two compartments, providing two, 5 liter (2.639 gallon) capacities for double serving or twice the holding capacity; All at a cost similar to a single unit.

Quality 18/10 stainless steel construction with drain base. Durable, poly-carbonate vessels are reinforced by a central ice tube with easy-to-use, dedicated water drain.

**Spring** USA<sup>®</sup>  
*The Evolution of Intelligent Design*<sup>™</sup>

# Coffee Urn

18/10 Stainless Steel • Solid Cast Stainless Steel Faucet



2505-6/6  
6 qt. / 1.5 gallon



2505-6/12A  
12 qt. / 3 gallon



2505-6/20  
20 qt. / 5 gallon

Our Renaissance Urns offer the utmost in exclusive design, unique detail and superior quality. Created from mirror polished 18/10 stainless steel. Legs and faucets are solid cast stainless steel, not brass. You can choose from six or twelve quart capacity.

2535-6/12  
12 qt. / 3 gallon

## Renaissance Coffee Urn

18/10 Stainless Steel

2535-6/6  
6 qt. / 1.5 gallon



*Optional*  
9503 Electric Heating Element  
110-120 V AC, 170W



See our Electric Heating Elements on page 10

# *RONDO Chafing Dishes*

- *Rolltop Lid*
- *Support Ring*
- *Full Size Insert*
- *Features our AA - All Angle Axle System*
- *Mirror-Polished 18/10 Stainless Steel*
- *Chrome-Plated Handle and Axle Covers*
- *Fuel holder*



**2509-6A**  
19" H  
26" L  
18 7/8" W  
9 7/8 qt. Cap.



**RONDO** chafing dishes come with full size insert and fuel holder

**2510-6/35**  
18 3/8" H  
13 3/4" Diam.  
8 qt. Cap.

# Built - In Chafing Dishes

- Roll-Top Lid
- Mirror-Polished 18/10 Stainless Steel
- Gold or Chrome Plated Accents
- All Angle Axle System
- Includes One Insert Pan
- Includes Mirror-Polished Trim Ring
- Includes One Heating Element



*Custom Tables Available*



2547-6/35

8 7/8" H

13 3/4" Diam.

8 qt. Cap.

Chrome Accents



2547-697/35

Same with

Gold Accents



2546-6A

9" H

26" L

18 7/8" W

9 7/8 qt. Cap.

Chrome Accents



2546-697A

Same with

Gold Accents

All items listed  
come with one  
insert pan and  
electric heating  
element

375-60/6

Additional tureen



2548-6/6H

9" H

11" Diam.

6 qt. Cap.

Chrome Accents

# Classic Chafing Dishes

Classic Chafing Dishes Offer All the Unique RONDO Design Features,  
With a Lighter Weight Stainless Steel, At A Lower Cost



**K2509-6**  
19" H  
26" L  
18 7/8" W  
9 7/8 qt. Cap.



Classic chafing dishes come with full size insert and fuel holder

**K2510-6/30**      **K2510-6/40**  
15 3/8" H      19 5/8" H  
18 1/8" Diam.      22" Diam.  
4 3/4 qt. Cap.      8 qt. Cap.

## Stadium Chafing Dishes

18/10 Stainless Steel

Stadium Chafing Dishes Come With One, Full Size Insert

**2539-6/30**  
13" H  
11 7/8" Diam.  
5 1/4 qt. Cap.



**2501-6/1**  
13 3/8" H  
25 1/8" L  
13 3/4" W  
9 7/8 qt. Cap.



Special tip-up, rolltop cover for easy insert removal.



**2592-6/1**  
25 1/8" L  
14 5/8" W  
15 3/8" H  
9 7/8 qt. Cap.



Built-in hinges allow the unit to adapt to your specific environment.

**519-60**  
Additional water pan

All chafing dishes carry a ten-year warranty for manufacturing defects on welding.



# Suite Servers



NSF

3374-6  
 11 1/4" H  
 19 7/8" L  
 15 3/8" W  
 6 qt. Cap.



Sauteuse

NSF

3372-6/36  
 11 1/4" H  
 15 1/4" Diam.  
 1 1/4 qt.  
 2 1/2 qt. Cap.  
 4 qt.



**Soup Station**

3375-6/6H  
 16 1/2" H  
 11 7/8" Diam.  
 6 qt. Cap.



**Insert pan and electric heating element must be ordered separately**

See our Electric Heating Elements on page 10

# Electric Heating Elements

*Thermostatically Controlled to Prevent Boiling*



9524/1



9509



9524

9503

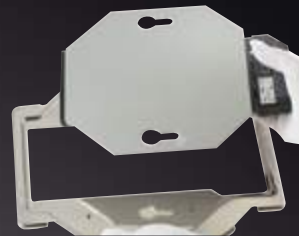
## Reflection Server Adapter Frames



EA171/174



EA172



See specification sheets on [www.springusa.com](http://www.springusa.com) for technical data.

### For Use With Round Chafing Dishes (11<sup>7</sup>/<sub>8</sub>" & 13<sup>3</sup>/<sub>4</sub>") and Suite Servers:

9520	100-120 V AC 2.0	240 W
9524	100-120 V AC 4.2	500 W
9524/1	100-120 V AC 4.2	500 W with adjustable temperature control

### For Use With Rectangular Full-Size and 22" Chafing Dishes:

9506/1	100-120 V AC	5.8	700 W with adjustable temperature control
9509	100-120 V AC	5.0	600 W
9517	100-120 V AC	3.75	450 W

### For Use With Coffee Urns & 3375 Soup Station:

9503	100-120 V AC 1.5	170 W
------	------------------	-------

### Reflection Server Adapter Frames

EA171/174 Electric Heating Element Adapter for the 171-6/11 & 174-6/23 Reflection Frame

EA172 Electric Heating Element Adapter for the 172-6/37 Reflection Frame

# Convertible Buffet System



The Convertible Induction Buffet System enhances any décor, utilizing space with maximum efficiency. Spring USA can offer you a variety of wood colors and SmartStone<sup>2</sup><sup>®</sup> countertop finishes.

Our Induction Buffet Systems are customizable to fit your needs. You choose the function of the induction ranges (Cook or Hold Only ranges). You decide the length you need for the area you are working with, and you choose the wood color to best compliment your décor. Other options available consist of heated cabinets, plate lowerators, shelving, refrigeration and exhaust systems.

With focus on environmentally friendly products, our SmartStone<sup>2</sup><sup>®</sup> Induction Systems is an easy choice. Made from recycled glass and granite, our material is highly efficient with low energy consumption. SmartStone<sup>2</sup><sup>®</sup> Induction Systems offer you the flexibility to use the space as you need it...use it for hot buffets, or clear the chafing dishes and use the space however you want to!

Ask a Spring USA Sales Representative today for additional details.



- No Fumes
- No Burns to Guests, Employees or Carpets
- Accurate Food Temperatures
- Fast, Easy & Efficient
- Units are Completely Custom
- Mobile or Stationary
- ~ You choose the Function and Design

# Seasons

## Induction Buffet Servers



**Rectangular - Bronze**  
 2384-567 Chrome Accents  
 2384-597 Gold Accents  
 2384-587 Black Pearl Accents



**Sauteuse - Bronze**  
 2382-567/36 Chrome Accents  
 2382-597/36 Gold Accents  
 2382-587/36 Black Pearl Accents



**Soup Tureen - Bronze**  
 2385-567/6 Chrome Accents



**(Optional) Seasons Colored Stands Available:**

**For Rectangular Servers**

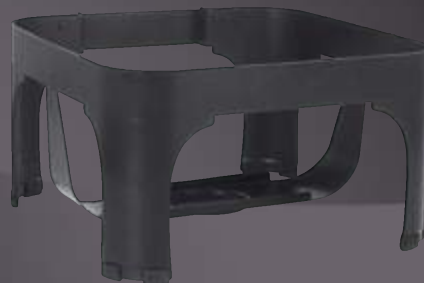
- E374-597 Bronze
- E374-8 Titanium

**For Round Servers**

- E382-597 Bronze
- E382-8 Titanium

**For Soup Servers**

- E375-597/6 Bronze
- E375-8/6 Titanium



**Insert pans  
 must be  
 ordered  
 separately**



*Accent Choice for Handle and Axle Covers :*

*Black Pearl*

*Chrome*

*Gold*



**Cover Positioning**

*Featuring the Spring USA "All Angle" Axle System, Allowing the cover to hold position at virtually any angle.*

**Water Return**

*A special water channel returns condensation from the cover to the water pan*



**Inserts**

*Porcelain or Stainless Steel insert options available*

**Induction Heating**

*Thermostatically controlled induction ranges ensure that the food is always kept at the desired temperature*



**Rectangular - Titanium**

- 2384-8 Chrome Accents
- 2384-897 Gold Accents
- 2384-88 Black Pearl Accents



**Optional Covers**

**Titanium**

- 375-61/6TB Black Pearl Accent
- 375-61/6TC Chrome Accent
- 375-61/6TG Gold Accent

**Bronze**

- 375-61/6BB Black Pearl Accent
- 375-61/6BC Chrome Accent
- 375-61/6BG Gold Accent



**Sauteuse - Titanium**

- 2382-8/36 Chrome Accents
- 2382-897/36 Gold Accents
- 2382-88/36 Black Pearl Accents



**Soup Tureen - Titanium**

2385-8/6 Chrome Accents

# Vision Servers

*The Clear Choice in Buffet Servers*



2472-6/36  
7" H  
15 1/4" Diam.  
1 1/4 qt.  
2 1/2 qt. Cap.  
4 qt.

- *Glass Cover*
- *Wing-Style Handle*
- *18/10 Stainless Steel*
- *Accents in Chrome*
- *"AA", All-Angle Axle System Allows the Cover To Hold Position At Virtually Any Angle*

Insert pans  
must be  
ordered  
separately



2474-6  
7" H  
18" L  
15 5/8" W  
6 qt. Cap.

# Convertible Buffet Systems



## Sautouse Buffet Server

2372-6/36

7" H

15 1/4" Diam.

1 1/4, 2 1/2, or 4 qt.

Chrome Accents



2372-697/36A

7" H

15 1/4" Diam.

1 1/4, 2 1/2, or 4 qt.

Gold Accents



See our Electric Heating Elements on page 10

Insert pans  
must be  
ordered  
separately

## Rectangular Buffet Server

2374-6

7" H

19 7/8" L

15 5/8" W

6 qt. Cap

Chrome Accents

2374-697

Same as above with Gold Handle



# Reflection Buffet Servers

- Easy-View Cover Allows Guests To See Contents Without Lifting the Cover
- Servers Feature Self-Closing Covers With Wing Style Handle
- Servers Are Induction-Ready • Cartridge Axle System & Stabilizer Bar
- Stands Available For Use With Canned Fuel • 18/8 Stainless Steel

## Mini-Reflection Servers

2172-6/30 Mini-Reflection  
Buffet Server, Round, 30 cm  
18-3/4" L  
15" W  
4-1/2 Quart

Additional Insert Item #572-  
66/30



172-6/30  
Stand For Mini-Reflection Round Server

2173-6/12 Mini-Reflection  
Buffet Server, Square  
16-3/4" L  
15" W  
5 Quart

Additional Insert Item  
#522-66/12



173-6/12  
Stand For Mini-Reflection Square Server

## Full Size Reflection Servers

2171-6 Full Size Reflection Buffet  
Server

18-7/8" L  
23-1/2" W  
9 Quart

Accepts Standard  
Insert Pans!

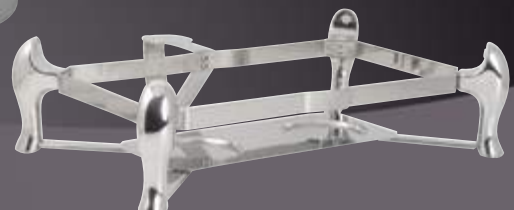


Servers come  
with one  
insert pan



Additional Insert  
Item #522-66/11

171-6/11 Stand For Full Size  
Reflection Server



Optional Electric Heating Elements On Page 10



# Reflection Buffet Servers

## Full Size Reflection Servers

2172-6/37 Reflection Buffet Server, Round

23-1/4" L  
18-7/8" W  
9 Quart



172-6/37 Stand For Round, 6 Quart, Reflection Square

Servers come with one insert pan

2174-6 Reflection Buffet Server, Square

19" L  
16" W  
6 Quart



Accepts Standard Insert Pans!

Additional Insert Item #522-66/23



174-6/23 Stand For Square, 6 Quart Capacity, Reflection Server

## Additional Round Reflection Inserts



Full Size, Round, 6 Quart, Stainless Steel Insert #572-66

## Optional Dim Sum Warming Pieces for Use With Reflection Full Size Round Server # 2171-6/37

- 172-37DS Dim Sum Set (Stainless Steel Adapter, Bamboo Basket & Cover)
- 172-37DB Dim Sum Basket (Only)
- 172-37DC Dim Sum Cover (Only)



Full Size, Divided Round, 6 Quart, Stainless Steel Insert #572-66/12



Optional Electric Heating Elements On Page 10

# Convertible Buffet Systems



## Soup Station

**2375-6/6H**

12" H

11 7/8" Diam.

6 qt.

Chrome Accents



Patented Hinged Cover!

## Optional Cover Available



**375-61/6**

Mirror Polished Stainless

See our Electric Heating Elements on page 10

## Accessories for Convertible Buffet Systems

**SBR-175**

Storage Box for Induction Ranges



Holds 2 Induction Ranges!

**SBS-175**

Storage Box for Servers



For Use With Round Servers Only

**E237**

CBS Bumper shown with  
372-601 Support



**E374-6**



For use with  
2374 servers

**E372-6**



For use with  
2372 & 2472  
servers



**372-601**

CBS Support for  
2371, 2372, 2373,  
2374, 2472 series servers  
to use on freestanding  
MAX Induction™ Ranges.

NOTE: These optional bases require the use of canned fuel as a heat source  
If electric heating is desired, other than induction, Suite Servers are shown on Page 9

# Convertible Buffet System / Suite Server Inserts



9552-59/36



372-66/36



372-36/12D

9557-59/36/12



372-66/36D



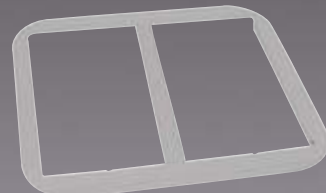
372-66/36/12



374-66/23



374-651/23



374-519/23

## Inserts/Food Pans

MODEL	COLOR	HEIGHT	DIMENSIONS	CAPACITY	
9552-59/36	White	3/4"	14 1/8" Diameter	1 1/4 qt.	for round servers
9554-59/36	White	1 1/2"	14 1/8" Diameter	2 1/2 qt.	for round servers
9557-59/36/12	White	2 1/4"	14 1/8" Diameter	2 qt.	for round servers
372-66/36	Stainless Full Round	2 1/2"	14 1/8" Diameter	4 qt.	for round servers
372-66/36D	Stainless Full Round	2 1/2"	14 1/8" Diameter	4 qt.	channeled bottom
372-36/12D	Stainless Half Round	2 1/8"	14 1/8" Diameter	2 qt.	channeled bottom
372-66/36/12	Stainless Half Round	2 1/4"	14 1/8" Diameter	2 qt.	not for use with 2373 server
374-66/23	Stainless	2 3/8"	15 3/8" x 15 5/8"	6 qt.	for rectangular servers
374-651/23	Stainless	For 2374 & 3374 to accept standard 2/3 hotel pans			
374-519/23	Stainless	For 2374 & 3374 to accept 2- standard 1/3 hotel pans			

# Inserts For Chafing Dishes



## Inserts for Rectangular Chafing Dishes:

Reference	Description	Dimensions	Height	Capacity
521-66/11	Full-size	20 7/8" x 12 7/8"	4"	14 3/4 qt.
522-66/11	Full-size	20 7/8" x 12 7/8"	2 1/2"	9 7/8 qt.
521-66/12	Half-size	12 7/8" x 10 1/2"	4"	6 7/8 qt.
522-66/12	Half-size	12 7/8" x 10 1/2"	2 1/2"	4 1/4 qt.
521-66/13	Third-size	12 7/8" x 7"	4"	4 1/4 qt.
522-66/13	Third-size	12 7/8" x 7"	2 1/2"	2 5/8 qt.
521-66/23	Two third-size	13 7/8" x 12 3/4"	4"	9 3/8 qt.
522-66/23	Two third-size	13 7/8" x 12 3/4"	2 1/2"	5 3/4 qt.

## RONDO High Polish Display Pans:

509-66/11A	Full-size	20 7/8" x 12 7/8"	14 3/4 qt.
509-66/12L	Half-size long	20 7/8" x 6 1/4"	6 7/8 qt.
509-66/12	Half-size	12 7/8" x 10 1/2"	6 7/8 qt.
509-66/13	Third-size	12 7/8" x 7"	4 1/4 qt.

## Inserts for Round Chafing Dishes:

Reference	Diameter	Height	Capacity
510-66/30A	11 7/8"	3"	4 qt.
510-66/35	13 3/4"	3"	8 qt.
Half pans for 35cm round chafing dishes: (sold separately):			
510-66/35/12			3 qt.
510-66/35/12D			3 qt.
Pans for chafing dish K2510-6/40 only:			
510-66/40			8 qt.



## White Porcelain Inserts, Oven Proof:

Reference	Description	Dimensions	Depth	Capacity
9541	Rectangular full-size	20 7/8" x 12 3/8"	2 3/8"	8 3/8 qt.
9542	Rectangular half-size	12 5/8" x 10 3/8"	2 3/8"	3 1/3 qt.
9543/1	Rectangular third-size	12 5/8" x 6 1/4"	2 3/8"	2 qt.
9543/2	Two-third size	13 7/8" x 12 3/4"	2 3/8"	5 qt.
9544/1	Round, full for 30 cm.	11 7/8" diam.	1 3/4"	5 qt.
9546/1	Round, full for 35 cm.	13 3/4" diam.	1 3/4"	6 qt.
Divided into two equally large food sections.				
9544/2	For 30 cm. chafers	11 7/8" diam.	1 3/4"	2 1/3 qt.
9545	For 40 cm. chafers	16 5/8" diam.	2 1/8"	3 1/4 qt.
9546/2	For 35 cm. chafers	13 3/4" diam.	2 1/8"	2 1/2 qt.



9545

9542

9541



9544/1



# Soup Service

## Soup Tureen

**375-60/6**

7 1/2" H

10" Diam.

6 qt. Capacity

Stainless

Without Cover



## Covers for Soup Tureens

**375-61/6**

Mirror Polished Stainless

For 6 qt. Tureen

Notch for Ladle



**375-697/6**

Mirror Polished Stainless

Gold Knob

For 6 qt. Tureen

Notch for Ladle



**E557-60/4.5**

7" H

9 1/2" Diam.

4 3/4 qt. Capacity

18/10 Stainless

Cover must be ordered separately

## Hinged Cover for Soup Tureen

**444-61/24H**

Mirror Polished Stainless

For 6 qt. Tureen

Notch for Ladle

Patented Design



## Ring for Soup Tureen and 30 cm. Chafing Dishes

**375-651/6**

For 6 qt. Capacity Tureens

18/10 Stainless

11 7/8 Diam.

Use with 30cm Chafing Dishes except 2539



**E557-61/4.5**

Cover Only for  
E557-60/4.5 Tureen  
18/10 Stainless

## Soup Adapting Overlays

**509-61A**

Adapts two 6 quart capacity tureens

18/10 stainless steel

Use with 2509/2546/2555 Chafing Dishes



**559-61**

Adapts two 4 3/4 quart capacity tureens

18/10 stainless steel

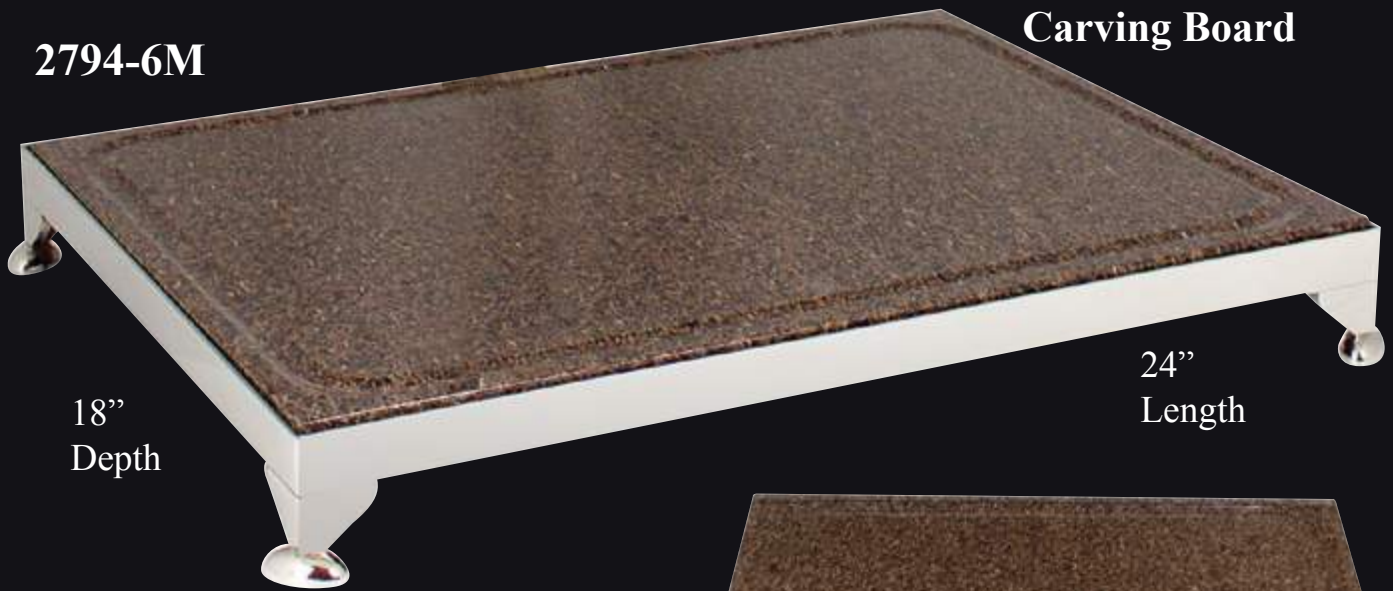
Use with 2592 & 2501 Chafing Dishes



# Heated Serving / Carving Station

Mocha Granite  
Carving Board

2794-6M



18"  
Depth

24"  
Length

Heated Carving Station with  
Mocha Granite Carving Board  
Includes # 9517 Electric Heating  
Element

110 volt, 450 Watts



- Maintains 150° to 160° Holding Temperature
- Perfect for Serving Hot Hors D'oeuvres
- 18/10 Mirror-Polished Stainless Steel Carving Station Base
- Carving Station Can Be Used Independently, or With Heat Lamps
- Carving Board Is Reversible

# Heat Lamps & Carving Stations



Mocha Granite  
Onyx Granite

18"  
Depth

24" Length



27"  
Height

Complete your buffet with our stunning Carving Station & Heat Lamps. Heat lamps, single or double, are available in satin or mirror-polished finish. Our Heat Lamps are constructed from 18/10 stainless steel, not chromed brass, like others. Heat Lamps feature solid positioning, pivoting heads that maintain adjustment without falling. This beautiful carving station can be used independently for cheese, hors d'oeuvres or desserts. Spring USA Heat Lamps and Carving Stations are attractively styled, durable, and easy to clean.

Reference	Description
2791-5	Single Heat Lamp Satin Finish
2791-6	Single Heat Lamp Mirror-Polished Finish
2792-5	Double Heat Lamp Satin Finish
2792-6	Double Heat Lamp Mirror-Polished Finish
2793-5	Carving Station Satin Finish, Dual Heat Lamp
2793-6	Carving Station Mirror-Polished Finish, Dual Heat Lamp

\* Please indicate carving board color when ordering  
ie. 2793-6O (Onyx Granite) or 2793-6M (Mocha Granite)

# Warming Tray

By **Spring** USA®

ST-1220

## Features:

- *Power Switch & Temperature Adjustment Knob Located on Operator's Side*
- *Only 2.1 Amps!*
- *200° Surface Temperature*
- *Satin, Stainless Steel Body*
- *Low-Profile Design Only 1 3/4" tall*
- *Perfect For Buffet Or Suite Service ~ Almost Any Venue!*



13-3/4"

20-3/4" (24" Including Handles)

Only 2.1 Amps!



International Version  
ST-1223, 220-230 Volt