

# 2017 Menu



## Silverware Handling



**S-500** - Stainless Steel Cylinder. The silverware cylinder was invented by the Steril-Sil Company in 1938. Our stainless steel version is 18 gauge 304A stainless with an electro-polish finish. And like all Steril-Sil products, it is made in the U.S.A.



**Nylon Series** - Nylon High-Temp Colored Cylinders



**RP-25 Series** - Plastic Colored Cylinders



**PN-1 Series** - Suction Cup Multi-Purpose Cylinders



**CRT Series** - Mobile Tray and Silverware Carts



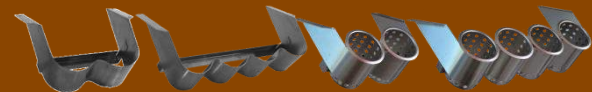
**TC Series** - Multi-Row Countertop Dispensers



**LTC Series** - Single-Row Countertop Dispensers



**HKS Series** - Cantilevered Countertop/Wall-Mount Dispensers



**UB Series** - Underbar / Under-Counter Dispensers



**BS Series** - Silverware Baskets



**SK Series** - Heavy Duty Soak Sinks

## Multi-Purpose Dispensing



**CRT Series** - Mobile Tray and Silverware Carts with Hotel Pan Cutouts. Carts and dispensers utilizing hotel pans can dispense a wide range of items including wrapped plasticware, portion control condiment packs, straws and more. These carts and dispensers are a great solution to dispense a wide variety of items.



**WSA Series** - Hotel Pan Wall Shelves



**VTC Series** - Hotel Pan and Cylinder Combination

## *E1 Silverware Handling System*



**E1-BS6OE** – Drop In Silverware Basket. Part of the E1 Silverware Handling System, the utilization of the basket and system greatly increases labor efficiency, creates a more organized dishroom while keeping your silverware cleaner.



**E1 System Carts**



**E1 System Wall-Mount Dispensers**



**E1 System Sorting Tables**



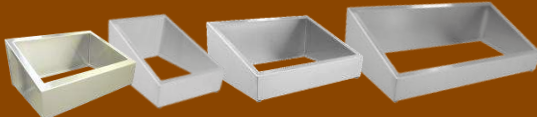
**E1 System Soak Sink**



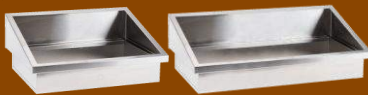
**E1 System Basket Storage and Transport Cart**



**E1 System Inserts** - Dispense a Wide Variety of Items



**E1 System Countertop Dispensers**



**E1 System Drop-In Angled Dispensers**



**E1 System Drop-In Flush Mount Dispensers**

## *Condiment Dispensing*



**CC-LTC-4SW** – Insulated ice-cooled condiment dispenser. Holds temperature for hours on a single ice-fill. Includes 30 oz. stainless steel containers and clear plastic hinged lids.



**Insulated Ice-Cooled Bottle Rail**



**Non-Insulated Condiment Dispensers**



**Lowboy 2.5 qt. Ice-Cooled Crushed Fruit Jar Dispensing**



**Highboy 3.5 qt. Ice-Cooled Crushed Fruit Jar Dispensing**



**30 Ounce Containers and Accessories**



**Insulated Ice-Cooled Condiment Dispensers**



**Complete Insulated Ice-Cooled Condiment Dispensers**